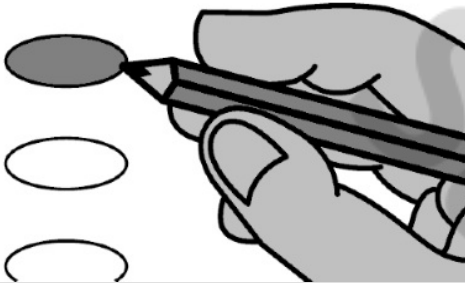


**Instructions**

!

If you tear, deface, or make a mistake and wrongfully mark any ballot, you must return it to the election board and receive a new ballot or set of ballots.

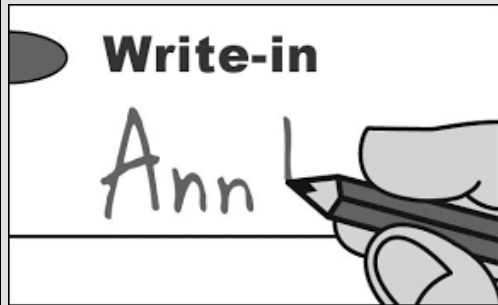
**Making selections**



To vote for a person whose name is printed on the ballot, darken the oval to the left of the name of the person for whom you desire to vote.

**Optional write-in**

To vote for a person whose name is not printed on the ballot, write such person's name in the blank space and darken the oval to the left.



**National Offices**

United States House of Representatives District 2

- Nancy Boyda Democrat
- Matt Kleinmann Democrat

**State Offices**

Kansas Senator District 13

- Austin B. Stapleton Democrat

Kansas House of Representatives District 4

- Write-In

**County Offices**

County Commissioner District 1

- Clinton L. Walker Democrat

County Clerk

- Write-In

County Treasurer

- Write-In

County Register of Deeds

- Write-In

County Attorney

- Write-In

County Sheriff

- Write-In

**Township Offices**

Marion Township Trustee

- Write-In

Marion Township Treasurer

- Write-In

**Precinct**

Marion Committeeman

- Write-In

Marion Committeewoman

- Carol J. George Democrat

Sample